

FISD SCHOOL SAFETY LAYERS

ERICH R. KREITER

EXECUTIVE DIRECTOR OF SAFETY AND OPERATIONS



Agenda

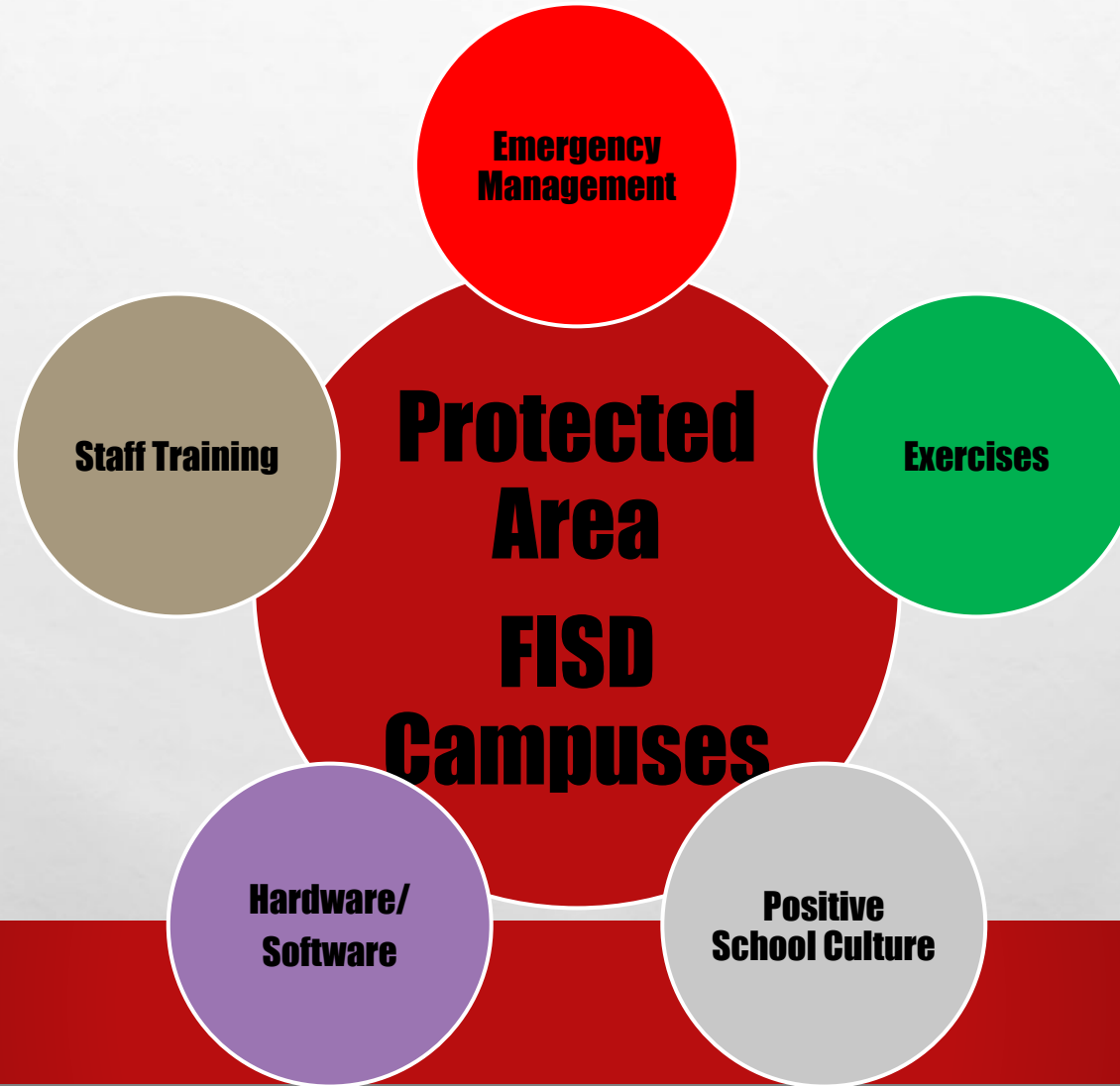
- **Mission and Statement**
- **Five layers of school safety**
- **Current sub layers in place**
- **Improvements and enhancements to current sub layers in place**
- **Optional layers to explore**
- **Achievable layers**
- **Cycle and layered approach example**
- **Questions**

FISD MISSION DRIVEN SAFETY LAYERS

Friendswood Independent School District aspires to be a premier school of choice where every student is future-ready in a global society.

In order to achieve this, it is the mission of the District to provide the necessary layers to create an intentional change in the culture of school safety, along with a common behavior framework that focuses on the social and emotional well being of staff and students.

Five Layers of School Safety



Emergency Management

Policy & Regulations

EOP

Law Enforcement

SROs

Safety Audits

Background Checks

Anonymous Reporting

Exercises

Drills

Table-Tops

Communication

Staff Training

Emergency Procedures

NIMS

Professional Development

Hardware/Software

Access Control

IDS (Intrusion Detection System)

Raptor

Security Cameras

Fencing

Signage

Positive School Culture

Administration and Staff

Counselors

Character Education Programs

Community

Dress Code

Student Code of Conduct

Current Sub Layers in Place

Emergency Management

Policy & Regulation Changes

EOP Updates

Law Enforcement +

SROs +

Safety Audits Cycle

Background Checks Enhanced

Anonymous Reporting Options

Exercises

Drills +

Table-Tops +

Communication

Staff Training

Emergency Procedures (All)

NIMS

Professional Development

Hardware/Software

Access Control Upgrades

IDS Upgrades

Raptor +

Security Camera Upgrades

Fencing Upgrades

Signage Additions

Positive School Culture

Administration and Staff (Culture)

Counselors + & Types

Character Education Programs +

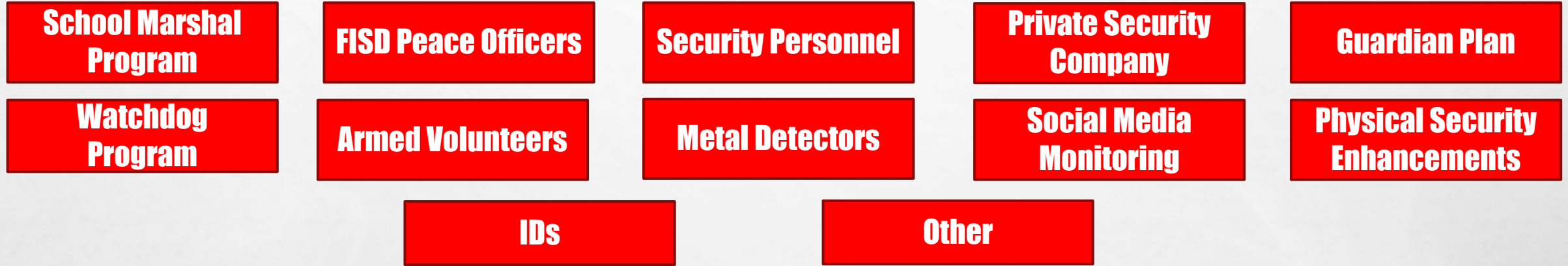
Community (Culture)

Dress Code Changes

Student Code of Conduct Additions

Improvements and Enhancements to Current Sub Layers in Place

Optional Layers to Explore



Goal: Careful Consideration and Sound Decision making to implement Measurable and Effective Layers that are Sustainable!

Emergency Management

EOP

Safety Audits

Policy & Regulations

\$\$ LE/Security \$\$

Exercises

Drills

Table-Tops

Staff Training

Emergency Procedures

Hardware/Software

\$ Access Control \$

\$ Signage

\$ Fencing

Positive School Culture

Character Education Programs

Administration and Staff

Dress Code

Student Code of Conduct

Optional Layers

Committee recommended, Board approved, most impact budget.

Achievable Layers

Campus

Perimeter

Community

External



Community



External Layers



Campus Perimeter Layers



raptor

Campus Internal Layers



Teachers & Staff

Continuous cycle and flow to identify, mitigate and/or eliminate potential risks!

Questions?